



LIFE SCIENCES

INDIANA ECONOMIC
DEVELOPMENT CORPORATION

iedc.in.gov

2,157 LIFE SCIENCES
COMPANIES
EMPLOYING 56,000 HOOSIERS

2ND NATIONALLY FOR
WORLDWIDE
LIFE SCIENCES EXPORTS

\$10.5 BILLION
IN WORLDWIDE
EXPORTS

TOP 5
STATE FOR
LIFE SCIENCES
INDUSTRY JOBS

2ND HIGHEST
CONCENTRATION OF
BIOPHARMACEUTICAL
JOBS NATIONALLY

“The Orthopedics Capital of the World” – WARSAW, INDIANA

MAJOR COMPANIES & INDUSTRY FOOTPRINT

SOURCE: Dun & Bradstreet, November 2020.

ELI LILLY AND COMPANY
Indianapolis

**LABORATORY CORPORATION
OF AMERICA HOLDINGS**
Indianapolis | Fort Wayne

**ZIMMER BIOMET
HOLDINGS INC**
Warsaw

**EUROFINS FOOD CHEMISTRY
TESTING MADISON INC**
Indianapolis

COOK GROUP INCORPORATED
Ellettsville

HERITAGE GROUP INC
Indianapolis

JOHNSON & JOHNSON
Warsaw

**QUEST DIAGNOSTICS
INCORPORATED**
Indianapolis

ROCHE HOLDING AG
Indianapolis

3M COMPANY
Indianapolis

**BOSTON SCIENTIFIC
CORPORATION**
Spencer

**ALVERNO PROVENA HOSPITAL
LABORATORIES, INC**
Hammond

BAYER AG
Remington

PFIZER INC
Indianapolis

**BECTON, DICKINSON
AND COMPANY**
Plainfield

**CAYLOR-NICKEL RESEARCH
INSTITUTE INC**
Bluffton

POINT MEDICAL CORPORATION
Crown Point

**FRANCISCAN
ALLIANCE INC**
Mishawaka

BAXTER INTERNATIONAL INC
Bloomington

**ALVERNO CLINICAL
LABORATORIES LLC**
Crown Point

CATALENT INC
Bloomington

RIIS HOLDING A/S
Indianapolis

**MEDTRONIC PUBLIC LIMITED
COMPANY**
Warsaw

**SOUTH BEND MEDICAL
FOUNDATION INC**
South Bend | Goshen | Mishawaka

HENRY SCHEIN INC
Indianapolis

LIFE SCIENCES INNOVATION

With a legacy of life sciences excellence, Indiana offers the perfect environment for exploration, experimentation and innovation. Indiana has a high concentration of trained engineers and scientists who have dedicated their lives to bettering the sector, meaning there's an abundance of opportunity for local partnership, support and cutting-edge research.

By collaborating with on-the-ground experts from research to manufacturing, life science companies are able to test, iterate and optimize their boldest ideas driving unprecedented growth and success. This powerful formula has transformed Indiana into one of the nation's top locations for life science businesses of every kind. Bring your biggest, most ambitious ideas to life with the resources and expertise available in Indiana to play a defining role in the world's future.

TOP-RANKED BUSINESS ENVIRONMENT

Through hard work and common-sense spending, Indiana has maintained a balanced budget for years, and has built a healthy reserve of “rainy day” cash. As a result, already low business taxes are actually trending down. Indiana businesses also enjoy remarkable regulatory freedom.

BIOCROSSROADS INITIATIVE

Corporate, academic and philanthropic partners are collaborating to invest in promising life sciences startups. The initiative supports existing organizations, including Indiana Health Information Exchange, BioCrossroads LINX, OrthoWorx, Datalys Center and the Indiana Biosciences Research Institute.

THE INDIANA HEALTH INDUSTRY FORUM (IHIF)

This statewide trade association represents members of Indiana's health science business community. The IHIF connects key stakeholders to enhance business networks, advocate for member interests, develop workforce skills and provide a strategic vision for Indiana's health industry economy and reputation.

THE INDIANA BIOSCIENCES RESEARCH INSTITUTE (IBRI)

This collaboration between life science industry executives and university leaders represents the first independent, industry-led institute in the nation.



TALENT PIPELINE

Indiana is home to nationally-ranked universities with world class engineering, bioscience and health care degree programs. These institutions play a vital role in Indiana's life sciences capabilities by providing research, education and workforce development. They also drive incubation programs, startup companies, research parks and communication complexes.

Butler University

- College of Pharmacy & Health Sciences

Indiana University

- IU School of Medicine
- Kelly School of Business, Center for Life Sciences
- IU Research & Technology Corporation

Purdue University

- Research Park
- Discovery Park
- College of Engineering
- College of Pharmacy

Rose-Hulman Institute of Technology

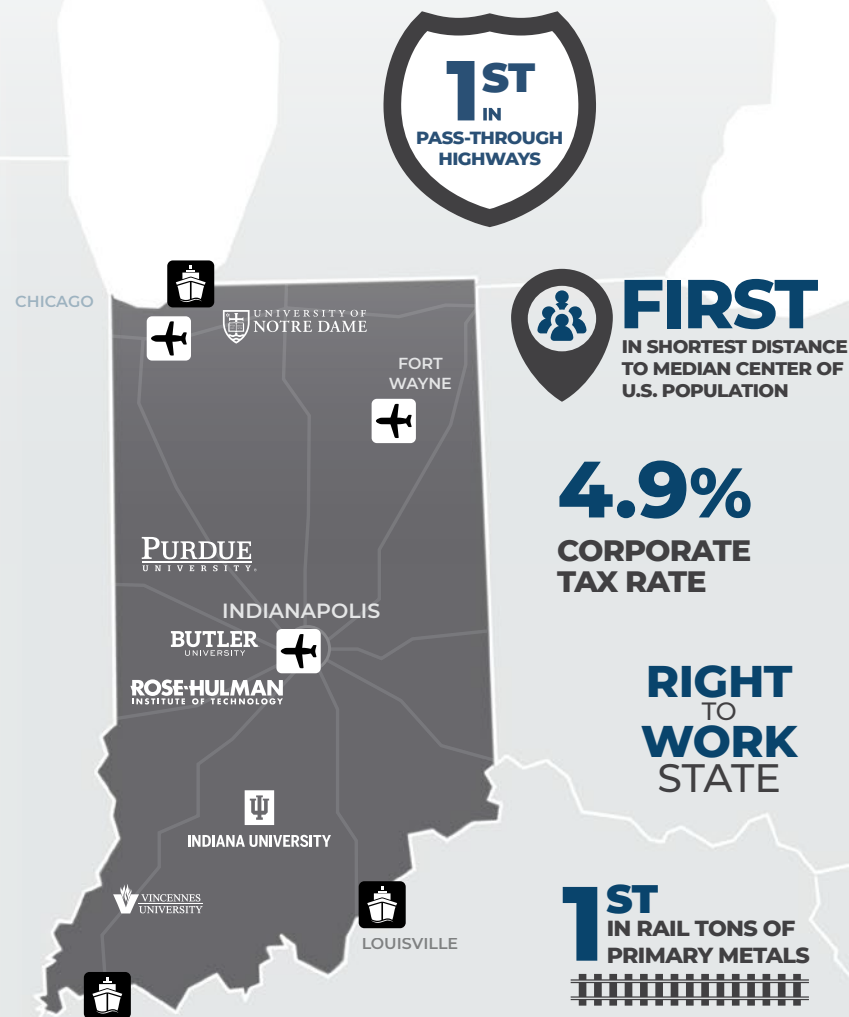
- Nation's top undergraduate engineering school
- Chemical Engineering and Biology & Biomedical Engineering Departments
- Rose-Hulman Ventures

University of Notre Dame

- Innovation Park
- Center for Nanoscience and Technology
- The Notre Dame Radiation Laboratory

Ivy Tech Community College of Indiana

- Indiana Center for the Life Sciences



INDIANA SUCCESS STORIES

Roche

SITUATION: Roche Diagnostics Corporation, which is the No. 1 biotech company in the world, host its North American headquarters and in Indianapolis. The company's Indiana roots, traced back to its founding as Bio-Dynamics, were grown from a one-man, start-up company in a garage to a global leader in less than 50 years.

SOLUTION: Roche quickly became a major employer in Indiana, supported by a 160-million campus in northeast Indianapolis that continues to grow and invest in sustainable solutions. Today, the company supports about 4,600 employees across R&D, manufacturing, quality, regulatory, distribution and global shared services. Roche's new 90,000-square-foot education center trains 1,500 customers and hosts 400 health care professionals annually to support pharmaceuticals and diagnostics advancements.

\$25.12
MEAN
HOURLY WAGE



95.2
COST OF LIVING
INDEX

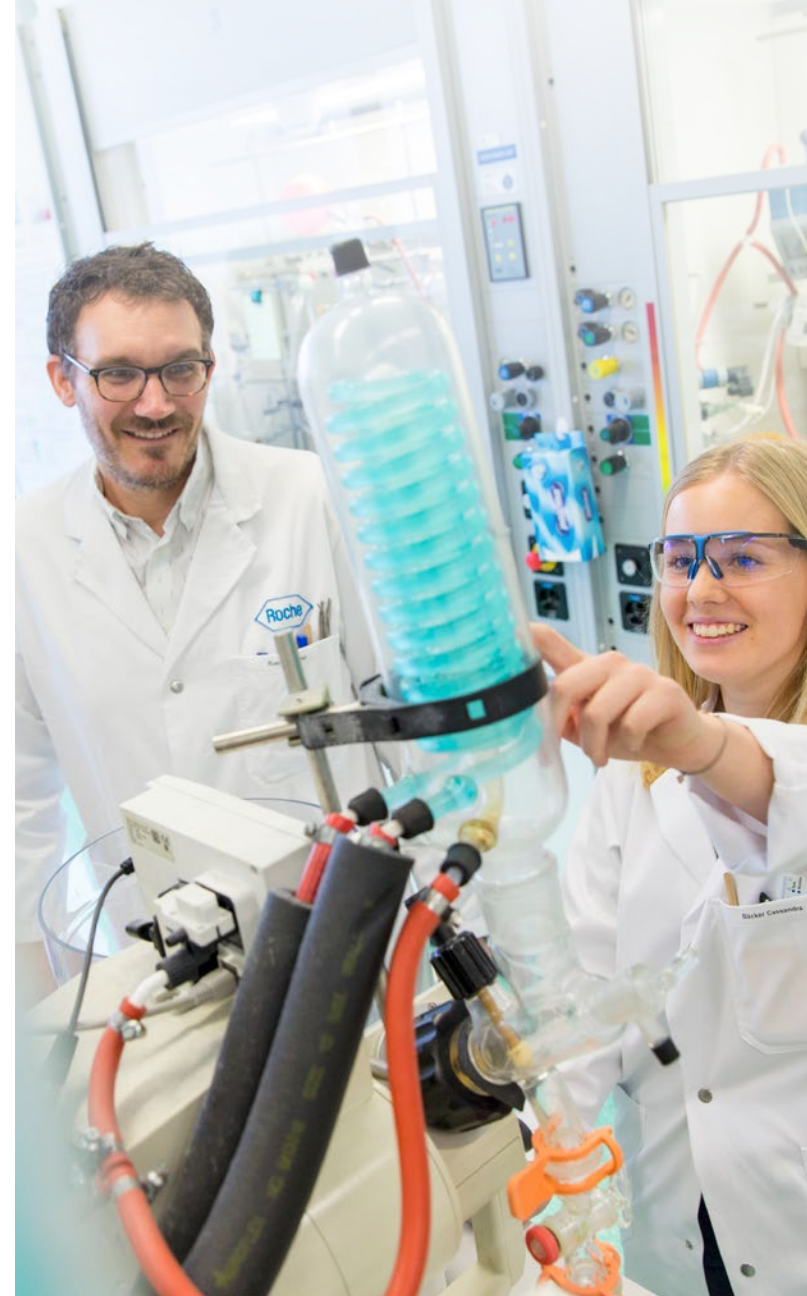
Catalent

SITUATION: As clinical advancements and life-saving treatments continue to grow, so too does the need to produce and deliver these solutions to consumers across the world. The industry has seen an increased demand for vial filling of biologic drugs, further compounded by the accelerated development of vaccine and therapeutic candidates to address the COVID-19 pandemic.

SOLUTION: Catalent, Inc. is making significant investments in its Biologics business, choosing its Bloomington operations for a more than \$100 million facility upgrade that will grow its manufacturing capacity and packaging capabilities. The Bloomington site, which had started its expansion prior to the COVID-19 pandemic, has been able to accelerate the overall project from a typical 18-month timeframe to approximately 10 months in total. With a projected completion of April 2021, Catalent will be positioned in Indiana to support the global supply chain for breakthrough treatments and vaccines.

"As the second largest exporter of life sciences products in the U.S., it's been a tremendous source of pride to contribute to Indiana's robust research and life sciences industries. The state and city continue to demonstrate a strong commitment to attracting and keeping businesses and talent here in Indiana."

Lawrence Joseph Wheat | **Founder**
MiraVista





Indiana
Economic Development Corp[®]

INDIANA ECONOMIC
DEVELOPMENT CORPORATION
1 North Capitol Avenue, Suite 700
Indianapolis, Indiana 46204

t +1.800.463.8081

iedc.in.gov