



Indiana
Economic Development Corp



GROUNDBREAKING GLOBAL INNOVATION IS HERE.

**Build Faster. Expand Further.
Reach Higher.**

Welcome to the LEAP Lebanon Innovation District, the next location of global innovation. With 5,000+ available acres strategically situated on Indiana's I-65 Innovation Corridor, LEAP offers diverse settings—megasite, advanced manufacturing, mixed-use and corporate campus—all on an SSI-certified (Strategic Site Inventory) site. A well-connected nexus central to the knowledge and innovation assets of both Indianapolis and Purdue's Discovery Park, LEAP Lebanon is your enterprise launchpad: Build faster, expand further and reach higher as you shape and support the economy of the future.



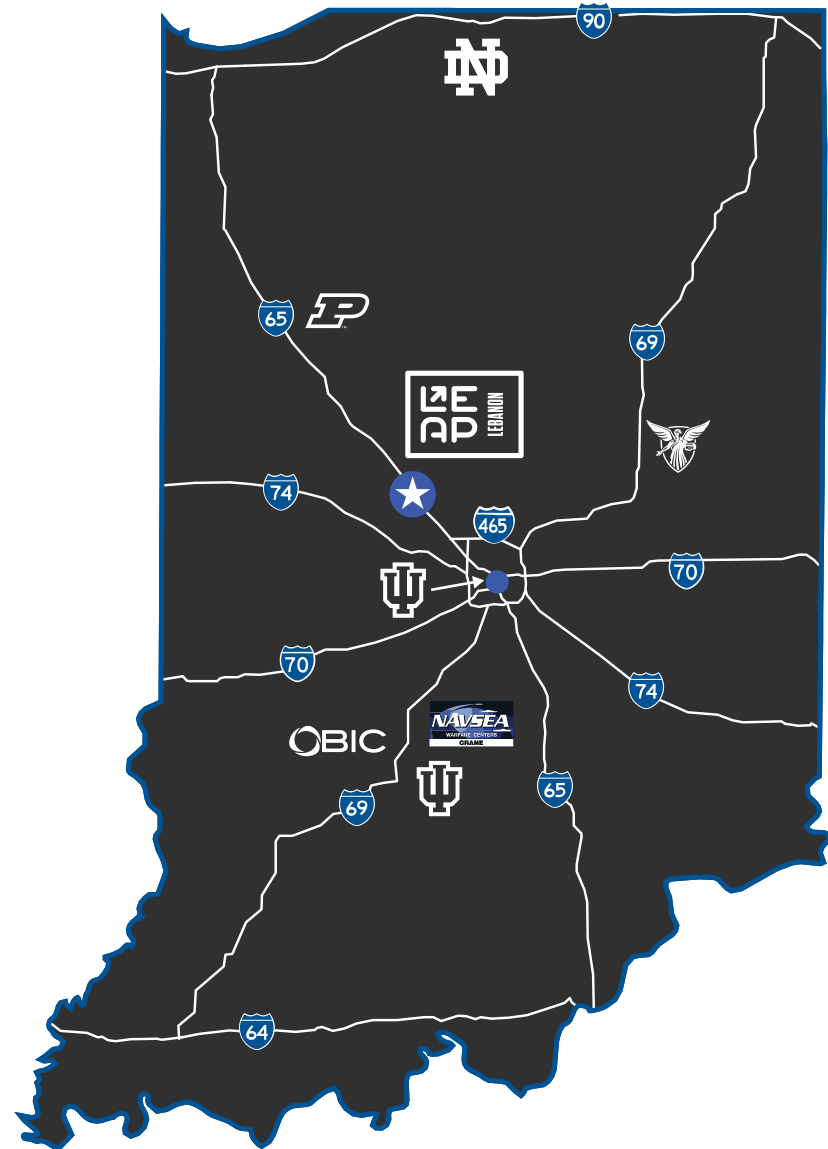
**30 miles from Indianapolis,
Purdue University, and Purdue's
Discovery Park.**



**Experienced workforce of 1 million+
within a radius of 60 minutes.**



**Multiple access points to the
I-65 Innovation Corridor connect to
Indiana's Interstate network.**



9,000+

acres ready to parcel for manufacturing, R&D facilities, or corporate campuses

#1

Indiana's top-ranked business environment offers an innovation friendly regulatory framework

50+

leading biotech, pharmaceutical and life sciences companies within 30 miles

#1

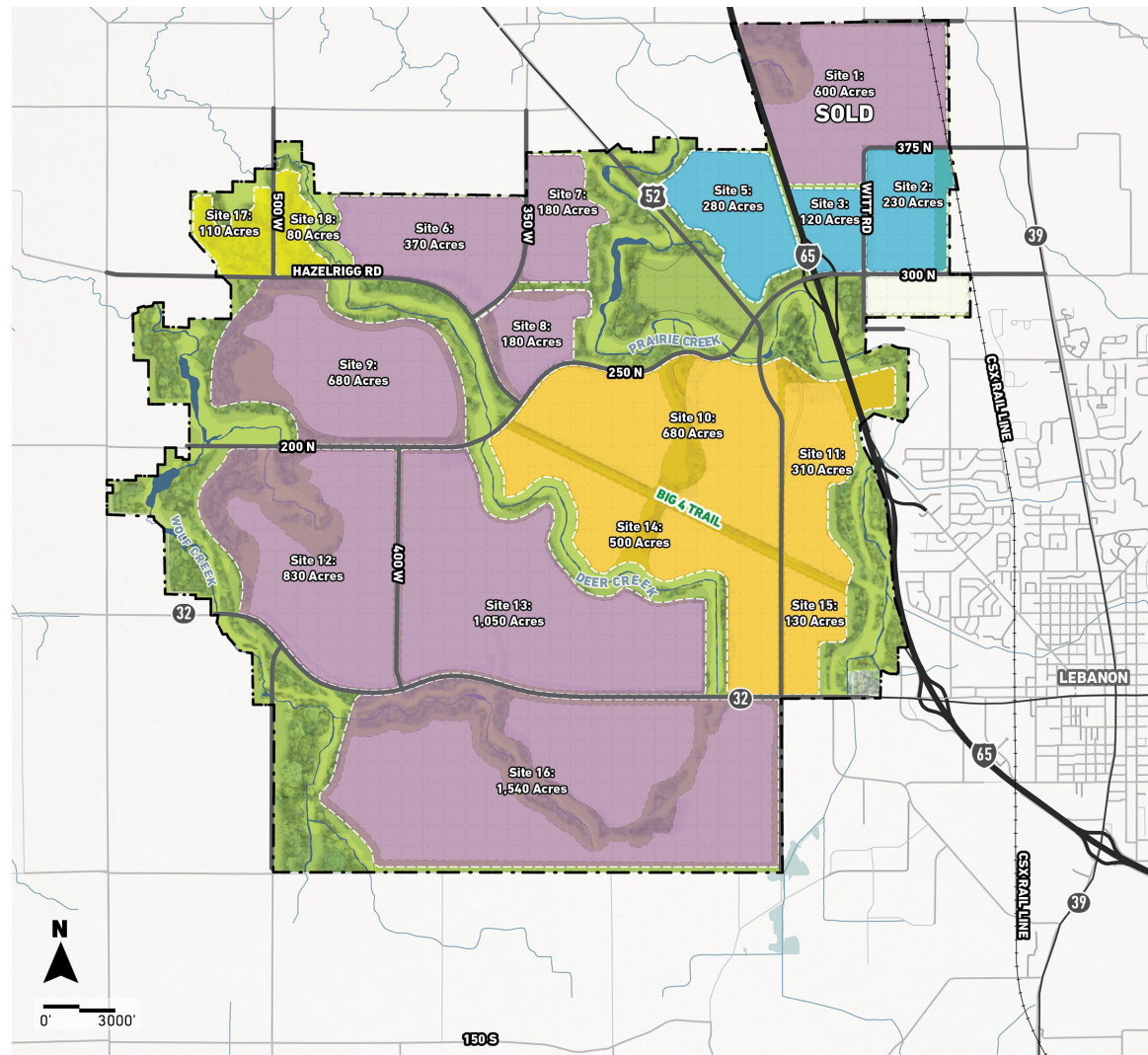
home to top companies including Roche, Dow, PPG, BASF, Eastman Kodak, and Vertullus

#5

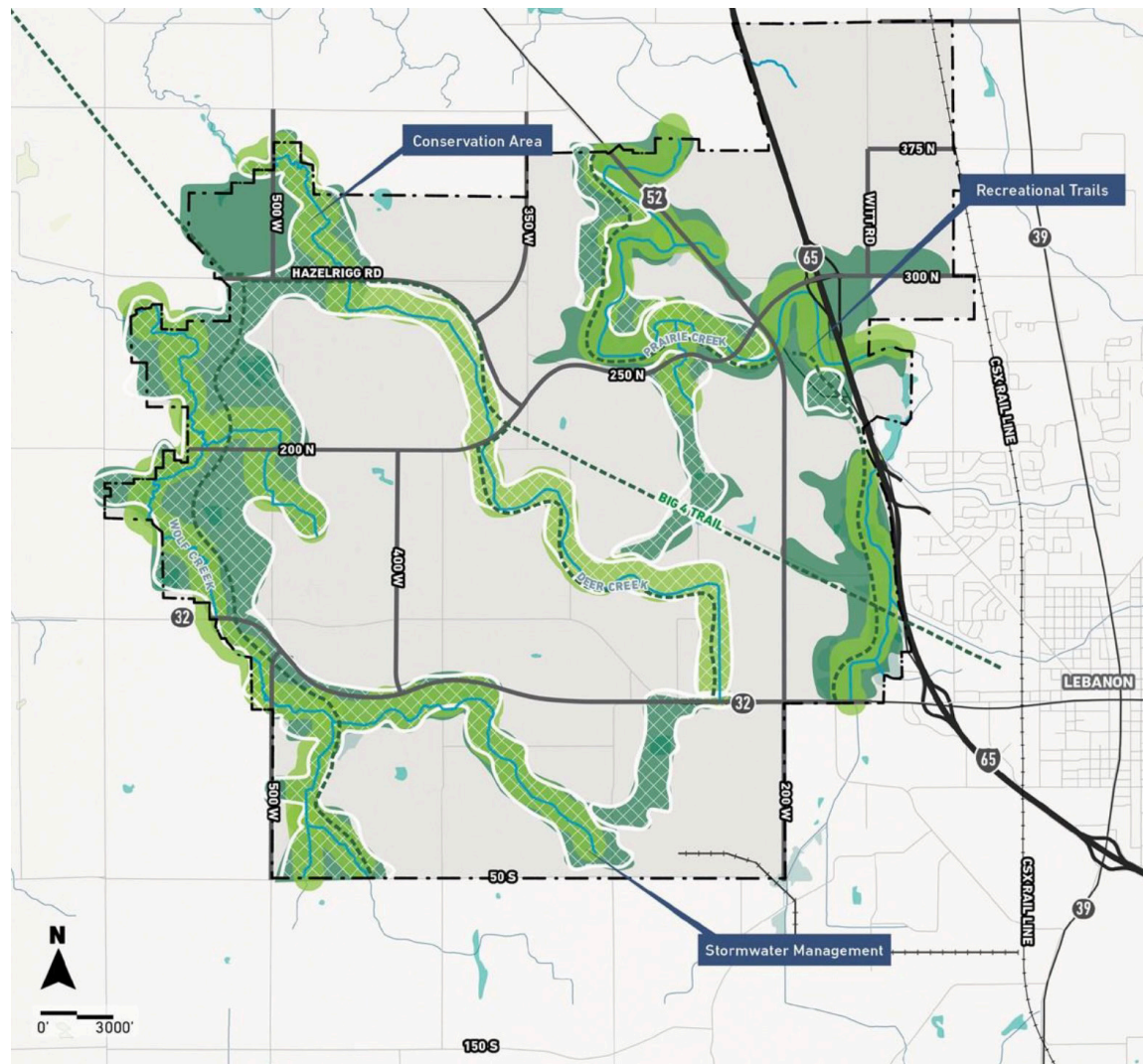
Carnegie R1 Purdue University, nation's 5th most innovative campus (U.S. News)



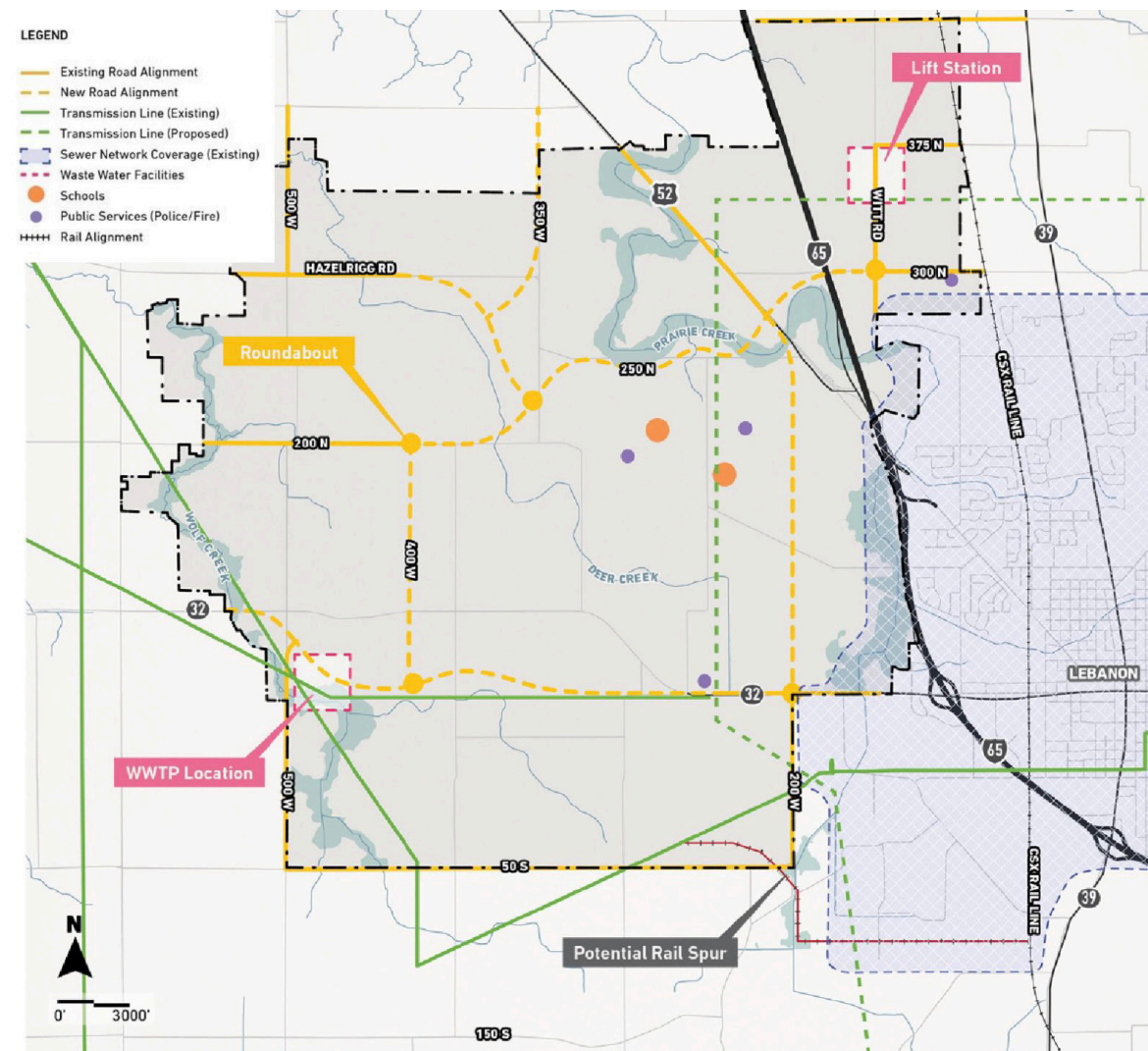
PROPOSED LAND USE



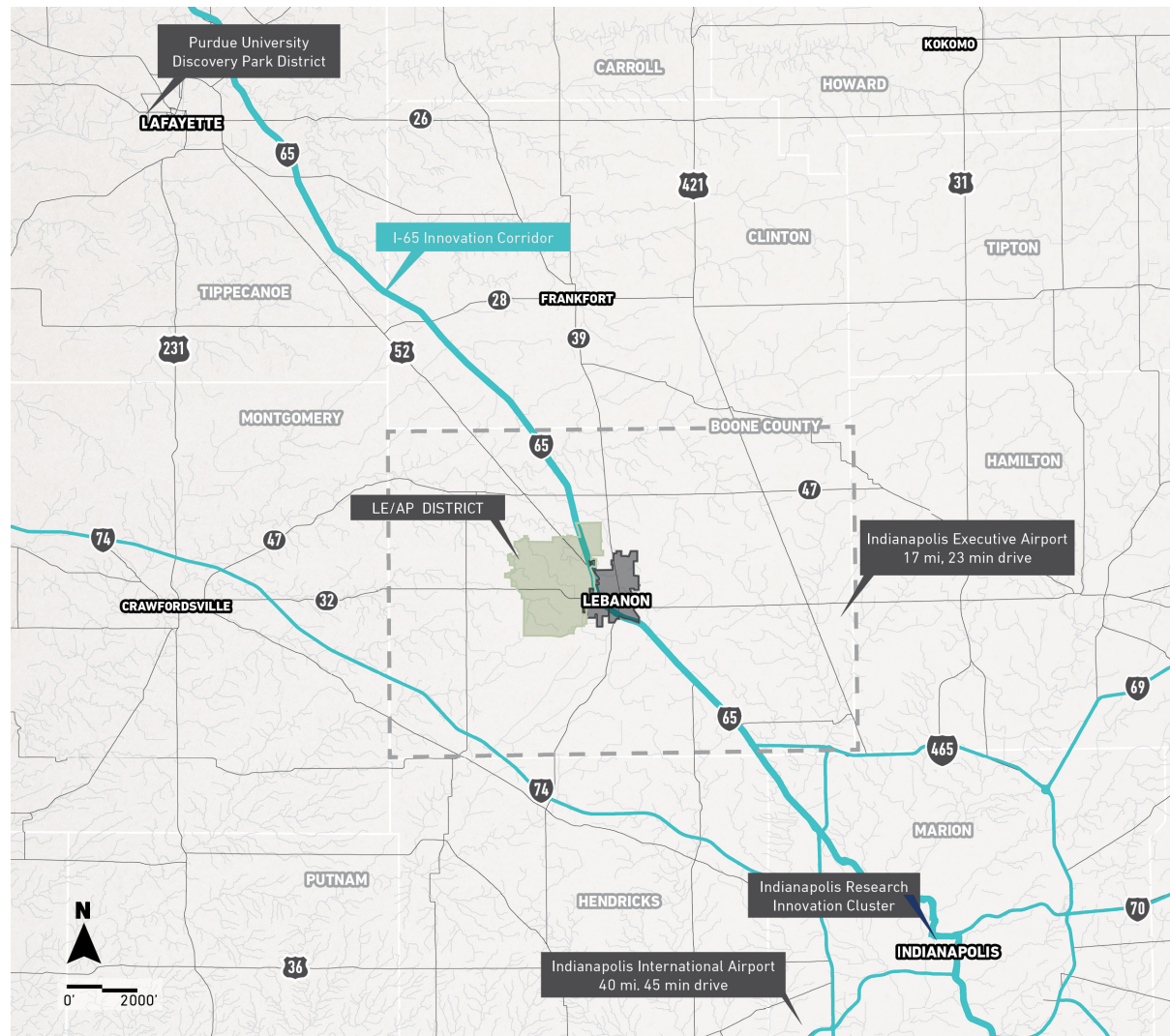
PROPOSED GREEN STORM WATER STRATEGY



MUNICIPAL INFRASTRUCTURE



REGIONAL LOCATOR





Indiana's Innovation Cluster

At Purdue University's Discovery Park, leading interdisciplinary research is expanding the boundaries of knowledge to address 21st century global challenges. The vital innovation hub of Indianapolis is changing the future, with the products and research of some of the world's premier companies in life sciences, ag tech, microelectronics, clean tech, and battery innovation.

A World Without Limits within 30 Miles

Options abound in the LEAP Innovation District: Immediate access to I-65 and two four-lane highways, alongside easy access to Indiana's comprehensive Interstate network, ensure maximum reach. Move fast in a supportive district setting that has a workforce at the ready, eager to take on challenges, from a diverse, high-quality pool drawn by an array of living options, from a metro setting, college towns, and small and medium-sized communities where top-ranked schools and superb amenities keep residents rooted and flourishing.



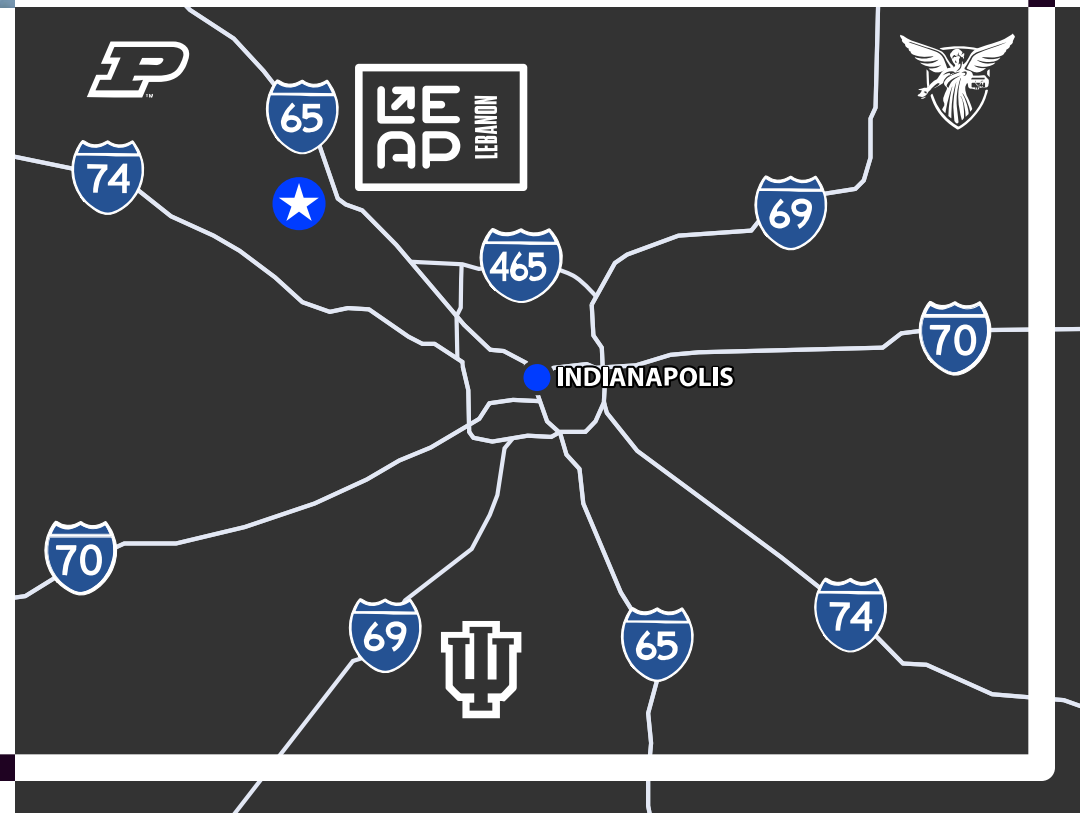


Potential

At full build, LEAP Lebanon will be home to hundreds of companies, employing over 50,000 employees at industry-leading companies devoted to boundary-breaking projects in life sciences, microelectronics, ag-tech, clean tech, and battery innovation. The District will advance research that creates knowledge and jobs together, providing a unique space for cross pollination and collaboration between R&D labs and advanced manufacturing.

Location

Located at the midpoint of a 70-mile technology corridor that connects Indianapolis to the nationally ranked Purdue University, LEAP Lebanon is also proximate to three highway interchanges and sits only thirty miles from the soon-to-be largest FedEx Hub in the world and the #1 ranked airport in the country, Indianapolis International Airport.



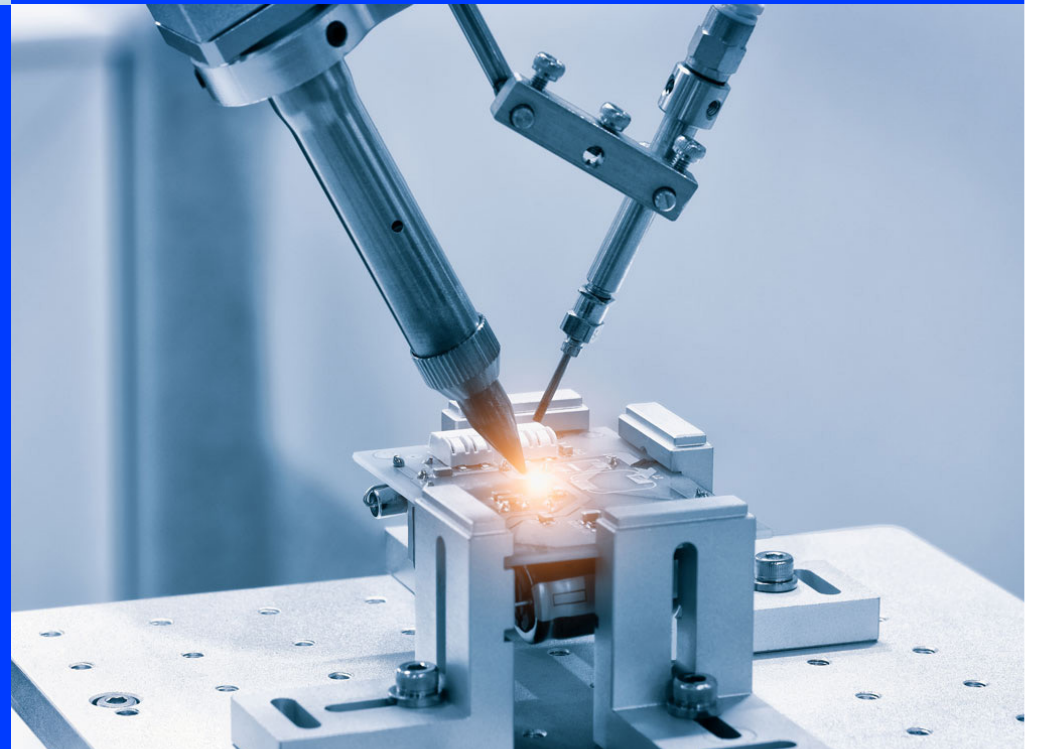


Intentionality in Design

LEAP Lebanon's strategic site selection is the result of a comprehensive review process conducted by the state of Indiana, an exacting evaluation of advantages such as infrastructure, available acreage and community leadership support—intentionality that promotes long-term prosperity.

Securing the Future Now

Global innovation. Limitless exploration. For industry and innovators, that is the promise of LEAP Lebanon Districts. And for Indiana, LEAP means powerful opportunity to re-shore production and critical industry, support the regional supply chain, grow the Indiana and regional economies, and, importantly, elevate the quality of life for Hoosiers.



NOTES





Anastasia Geminden Lowe
Site Marketing & Lead Generation
AGEMINDEN@IEDC.IN.GOV
463.214.0479

Indiana
Economic Development Corp®

*Boundaries and proposed improvements shown on the site map are conceptual only,
to be used for planning purposes, and are subject to change.*

